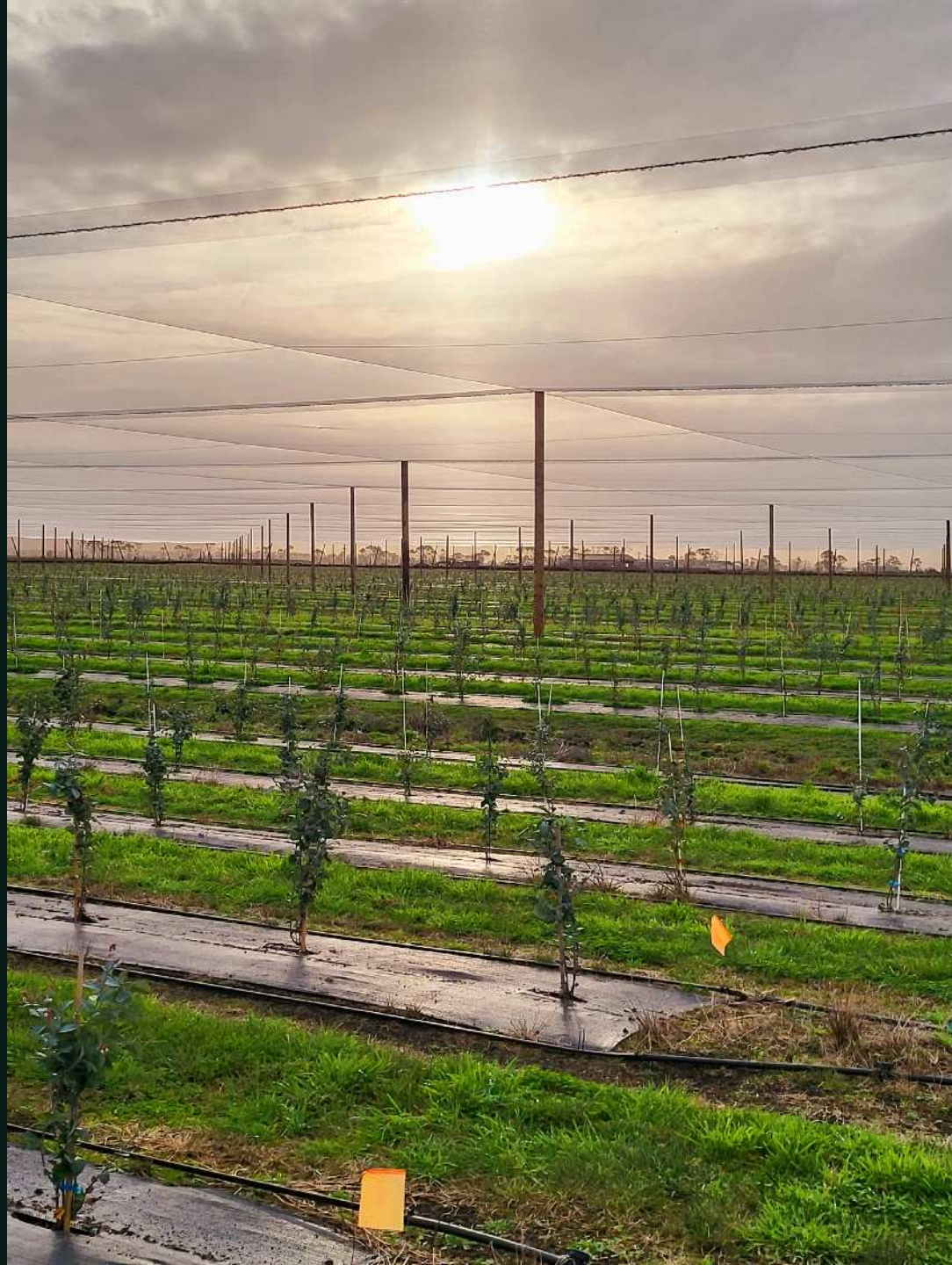


POUARUA

Challenges and Opportunities at the land block level

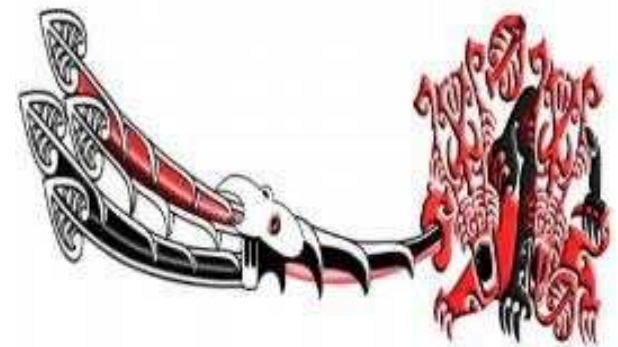
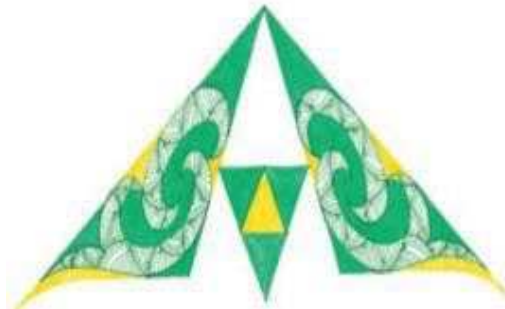


M Ā T E T I K A O T E K A I ,
K A P A I T E H A U O R A O
T E T A N G A T A





- Ngā Puke ki Hauraki ka tarehu
E mihi ana ki te whenua
E tangi ana ki te tangata
Ko Te Aroha kei roto
Ko Moehau kei waho
Ko Tikapa te moana
Ko Hauraki te whenua



Introduction

THE IWI OF HAURAKI

The descendants of Ngati Maru, Ngati Paoa, Ngati Tamatera, Ngati Tara Tokanui and Te Patukirikiri are, collectively referred to as, The Hauraki iwi owners of Pouarua. These iwi have the mana whenua and the farm is located within their traditional tribal rohe.



POUARUA

In 2013 the farms were purchased from the crown. The operation consisted of 8 Dairy Farms over 2,200ha and milked 5,300 cows. The farms were share milked by Landcorp for the following five seasons.

In 2019 the Iwi owners took full operational ownership of their whenua.



Occasional is becoming *Inevitable*

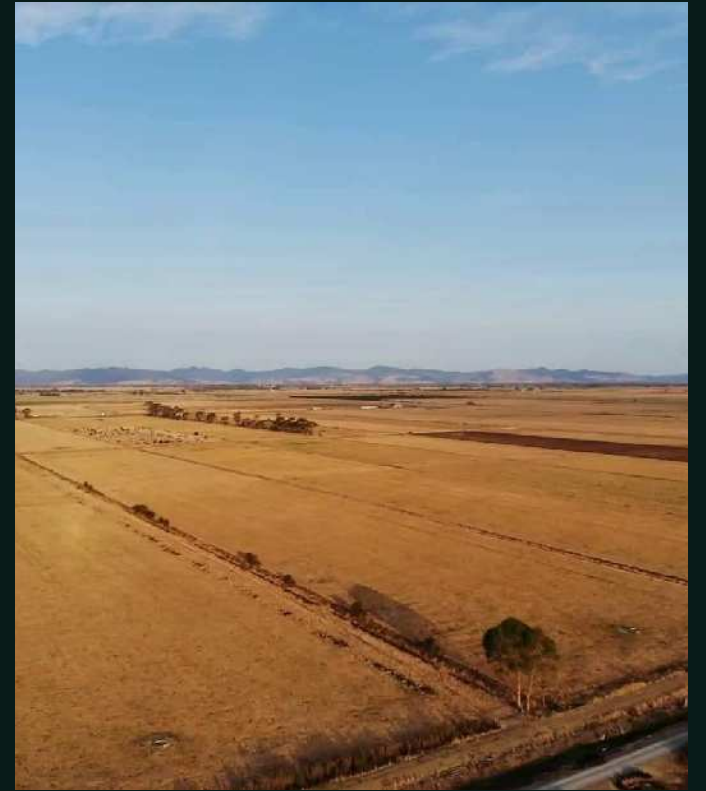
WINDSTORMS



FLOODING



DROUGHT



Infrequent is becoming *Persistent*

FLOODING



DROUGHT



FLOODING



Kaitiakitanga *while building income resilience*

Value add

Best & Highest land use

Aligned partnerships

Redesigned workplace

Technology

Mana Whenua

Agility





Strategy is less about playing by the rules and winning
And more about creating new rules and not losing

Mā te wā

*Mā te tika o te kai, ka
pai te hauora o te
tangata*

